

- ▶ [TRIRIGA Wiki Home](#)
- ▶ [Facilities Management ...](#)
 - [Facilities Maintenance](#)
- ▶ [Environmental & Energ...](#)
- ▶ [Real Estate Management](#)
- ▶ [Capital Project Manage...](#)
- ▼ [CAD Integrator-Publish...](#)
 - ▼ [Version 12](#)
 - [Changes in version 12](#)
 - [Changes in version ...](#)
 - [Changes in version ...](#)
 - [AutoCAD Command ...](#)
 - [Replicating Legacy ...](#)
 - [Troubleshooting CA...](#)
 - [Troubleshooting CA...](#)
 - [Turn on full logging i...](#)
 - [Import a HTTPS cert...](#)
 - [Manually Loading C...](#)
 - [MicroStation fails to ...](#)
 - [AutoCAD fails to loa...](#)
 - [Accessing the CI Ins...](#)
 - [12.x Application Defi...](#)
 - [Only one Gross Are...](#)
 - [Options for selectin...](#)
 - [Manual Import of a 1...](#)
 - [\(12.1.x and later\) Co...](#)
 - [Finding Floors with ...](#)
 - [Manual Import of a 1...](#)
 - [Troubleshooting \(12...](#)
 - [Trouble Installing or ...](#)
 - [Troubleshooting CI ...](#)
 - [Tips on Uploading S...](#)
 - [MicroStation fails to ...](#)
 - [Troubleshooting - A...](#)
 - [Troubleshooting - Mi...](#)
 - [CAD Mapping Limita...](#)
 - [Space Label Generato...](#)
 - [Exporting Uploaded C...](#)
 - [Label Positioning in C...](#)

- ▶ [BIM](#)
- ▶ [IBM TRIRIGA Connector...](#)
- ▶ [IBM TRIRIGA Anywhere](#)
- ▶ [IBM TRIRIGA Applicatio...](#)
- ▶ [Release Notes](#)
- ▶ [Media Library](#)
- ▶ [Best Practices](#)
- ▶ [Upgrading](#)
- ▶ [Troubleshooting](#)
- ▶ [UX Framework](#)

Index

Members


Trash

▼ [Tags](#) ?[Find a Tag](#)

[analysis](#) [application](#)
[availability_section](#) [best_practices](#)
[cad](#) [change_management](#)
[changes](#) [compare](#)
[compare_revisions](#)
[customizations](#) [customize](#)
[database](#) [db2](#) [exchange](#)
[find_available_times](#) [gantt_chart](#)
[gantt_scheduler](#) [group](#)
[memory_footprint](#) [modifications](#)
[modify](#) [object_label](#)
[object_revision](#)
[operating_system](#) [oracle](#)

You are in: [IBM TRIRIGA](#) > [CAD Integrator-Publisher and BIM](#) > [Version 12](#) > [Manually Loading CI using Netload](#)

Manually Loading CI using Netload

 | Updated May 20, 2013 by [MartinBurch](#) | Tags: *None*

Page Actions ▾

By default, the CI installer will automatically configure AutoCAD to load the CAD Integrator plugin automatically. However, some users may want to disable the auto loading behavior in favor of manually determining when to load CAD Integrator. This wiki will describe how to set this up and use AutoCAD's "netload" command to achieve this behavior.

Advantages:

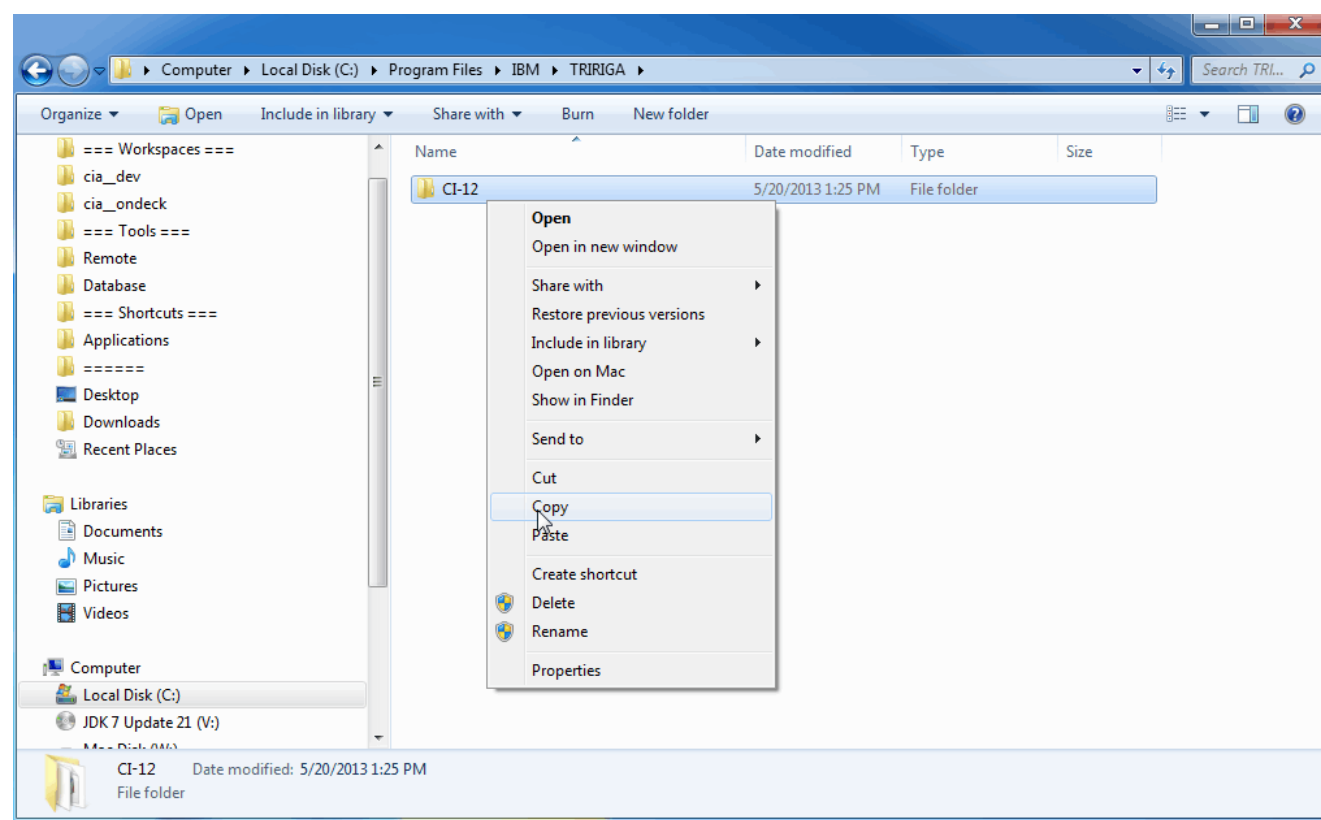
- You can keep CI unloaded most of the time while working with drawings.

Disadvantages:

- You will have to use the "netload" command manually to load CI. If you close AutoCAD, you will need to reuse "netload" the next time you need to load CI.
- There is no way in AutoCAD to reverse a "netload" command. Therefore to disable CI you have to restart AutoCAD.

Setup and Instructions:

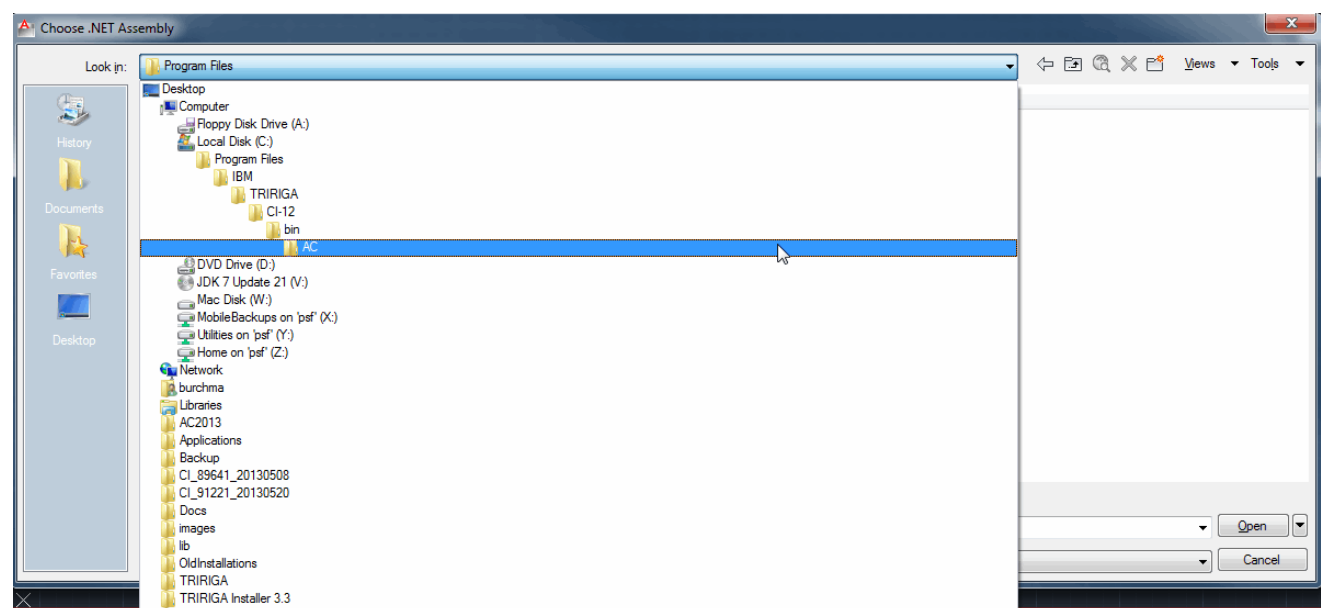
1) Assuming you have already installed CI, copy the deploy directory to somewhere else, like the desktop:



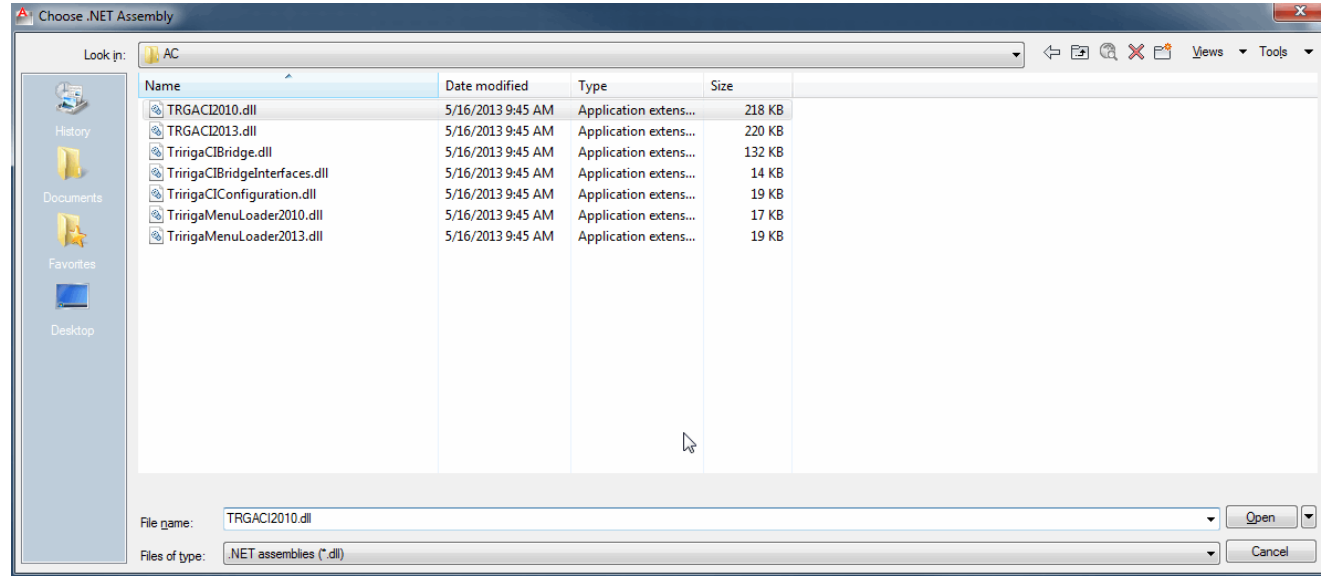
2) Run the CI Installer, and uninstall CI. This will remove the registry keys and the old deploy directory.

3) Copy your other deploy directory back into the same location as before.

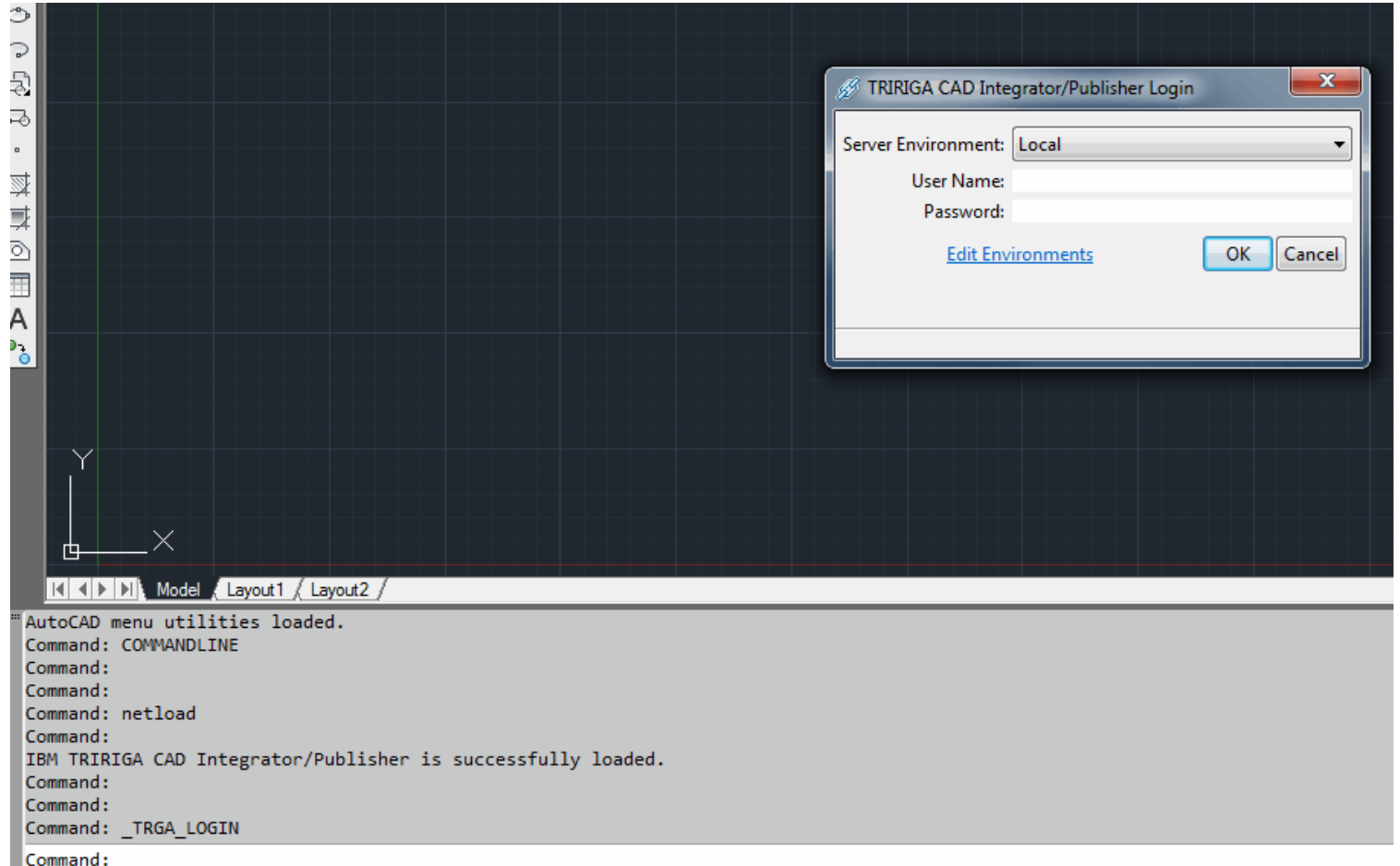
4) Open AutoCAD. Type in "netload", and navigate to the <install dir>/bin/AC.



5) Load the TRGACI****.dll for the version of AutoCAD you are using. For AutoCAD 2011 and AutoCAD 2012, use **TRGACI2010.dll**. For AutoCAD 2013 on a 64-bit machine, use **TRGACI2013.dll**. For AutoCAD 2013 on a 32-bit machine, use **TRGACI2013x86.dll**. Note that if you only have one version of AutoCAD installed, then the correct dll will be there and the other two will not.



6) Wait for the message "IBM TRIRIGA CAD Integrator/Publisher is successfully loaded". At this point, CI will be loaded and in effect.



Note that the menu should still already be loaded. If not, you can use the "CUILOAD" command to load the menu manually, which works the same as in older versions of CI.

[Comments \(0\)](#)
[Versions \(6\)](#)
[Attachments \(4\)](#)
[About](#)

There are no comments.

[Feed for this page](#) | [Feed for these comments](#)